

doremi

Technology Leadership
for Digital Cinema

DCP-2000

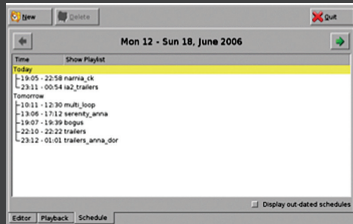
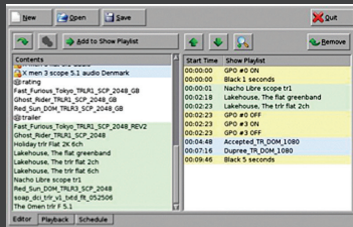
Cinema Server

PREFERRED PRODUCT

DIGITAL CINEMA
THEATERS
WORLDWIDE

Key Features:

- + Multi-File Playback
- + 2D & 3D Playback
- + Enhanced Security
- + Captioning Device Control



The DCP-2000 cinema server provides superior reliability, image quality and an unmatched feature set. Each DCP-2000 reflects Doremi's thirteen years of image server design and manufacturing experience, and the benefits of supporting the world's largest cinema server installation.

The DCP-2000 supports JPEG2000 and MPEG2 files. In addition it features Panavision3D®, REAL D®, XpanD®, and dual-projector 3D playback.

Each DCP-2000 server includes the CineLister software utility that provides effortless scheduling and playlist administration. Playlists can include both JPEG2000 and MPEG2 movie files, and pre-show content files.

The DCP-2000 was the first commercially available server capable of playing JPEG2000 digital movies conforming to DCI specifications. Today, it is by far the most installed cinema server worldwide.

CineLister Software

CineLister allows the operator to build and play composition playlists as well as full session playlists. Playlists can include both JPEG2000 and MPEG2 movie files and pre-show content files.

The graphic user interface simplifies the management of image files and creation of new image clips. CineLister's extensive playlist creation capability can be used for on-line playback and play list scheduling.



DCP-2000

PLAYBACK

- ▶ JPEG2000 2K or 4K movie and pre-show file playback at 2K resolution – 12-bit 444 (XYZ, RGB) on dual link HD-SDI
- ▶ MPEG2 MXF interop movie, pre-show and alternative content file playback
- ▶ 3D – JPEG2000 movies and 48p playback via Dual 10-bit 422 (YPbPr/YCxCz)

SECURITY

- ▶ TI's CineLink II Strong Link Encryption
- ▶ Thomson's NexGuard Forensic Watermarking
- ▶ FIPS 140-2 Level 3 Security Certified

INTERFACE

- ▶ Gigabit Ethernet for file transfer
- ▶ Gigabit Ethernet for control & subtitling
- ▶ RS-422 serial control port
- ▶ USB2.0
- ▶ External control of captioning devices WGBH & PCS (Option)

STORAGE

- ▶ Up to 4TB of RAID5 storage

AUDIO

- ▶ AES/EBU audio digital 16 channels
 - Single DB-25 connector
- ▶ Balanced or unbalanced analog audio 8 channels (two options available)
 - Single DB-25 connector internal board
 - External digital audio (DB-25) to analog audio converter in a 1RU rack mount chassis

GPIO

- ▶ 8 optically isolated inputs
- ▶ 8 open collector outputs

VIDEO OUTPUT

- ▶ Dual link HD-SDI with physical link encryption

OUTPUT RESOLUTION

- ▶ Dual link 2048 x 1080 24p 4:4:4 12 bit
- ▶ Two single links 2048 x 1080 24p 4:2:2 10 bit

POWER

- ▶ Dual-Redundant Power Supply
- ▶ 100–240VAC 50–60Hz (2 x 300W)

DIMENSIONS

- ▶ 3U Rack Unit
- ▶ 19" x 22" x 5.25" inch (48 x 56 x 13cm)

The English version of this document is the only legally binding version. Translated versions are not legally binding and are for convenience only



Technology Leadership
for Digital Cinema

Doremi Labs, Inc.
1020 Chestnut St. Burbank, CA
91506 U.S.A.

Tel : +1 (818) 562-1101
Fax : +1 (818) 562-1109
www.DoremiLabs.com